

LEGEND
 " or in. means inch or inches
 ' or ft. means foot or feet
 No. means number
 C. means Center Line
 EL. means Elevation
 8" Vitrified Pipe Sewer to be Constructed Shown Thus
 8"x4" Wyes with 4" Connecting Sewers to be Constructed Shown Thus
 Manholes to be Constructed Shown Thus
 High pressure gas main Shown Thus
 Water main Shown Thus
 Manhole now in Shown Thus

SEWER DETAIL
 Lineal ft. of 8" Vitrified Pipe Sewer to be Constructed
 Lineal ft. of 4" Vitrified Pipe Sewer to be Constructed
 No. of 8"x4" Wyes with 4" Connecting Sewers to be Constructed
 No. of Manholes to be Constructed

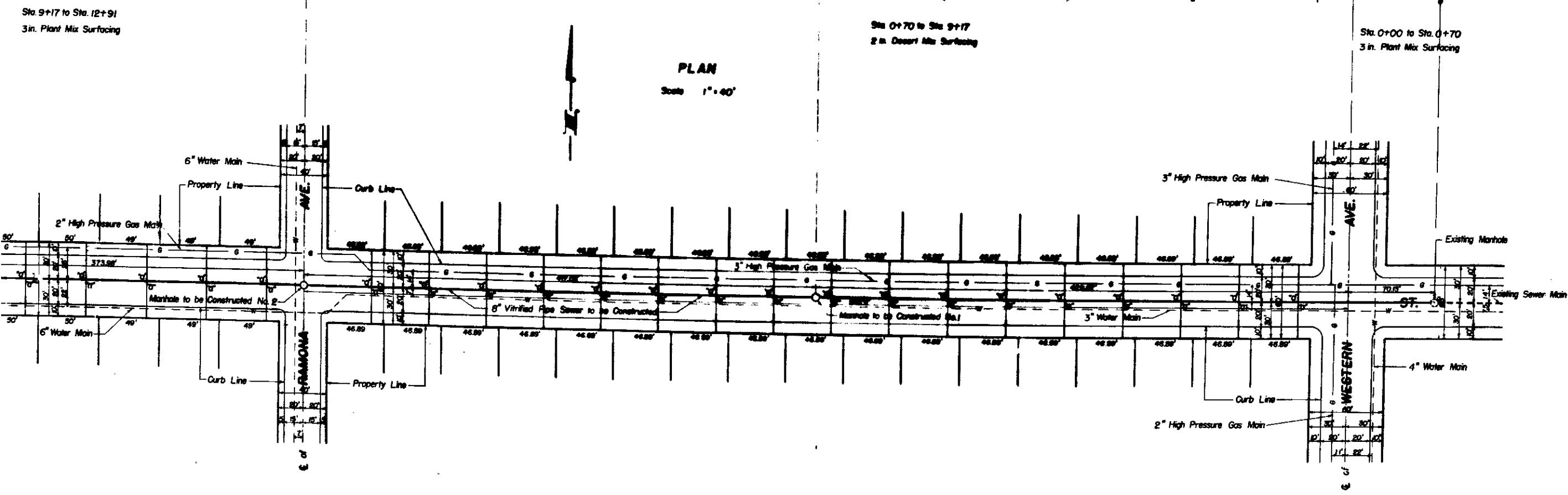
TITLE TO STREETS
 Lateral Avenue changed to Union Street by Resolution No. 109, of the City of SAN BERNARDINO, CALIFORNIA, adopted November 3, 1930.
 Union Street dedicated by Map of Tract No. 1822, Block 18 Tract recorded in Book 26 of Maps, Page 4, and Map of Tract No. 2966 recorded in Book 40 of Maps, Page 9, Records of SAN BERNARDINO COUNTY, CALIFORNIA.

DATUM
 All elevations shown are in feet and are above a plane which is 1045.28 feet below the City Bench Mark as established by Ordinance 383 of the City of SAN BERNARDINO, CALIFORNIA.

NOTE
 All Vitrified Pipe Connecting Sewer shall be constructed on an upward grade of Two Per Cent from Main Sewer and shall extend from Main Sewer to the Property Line

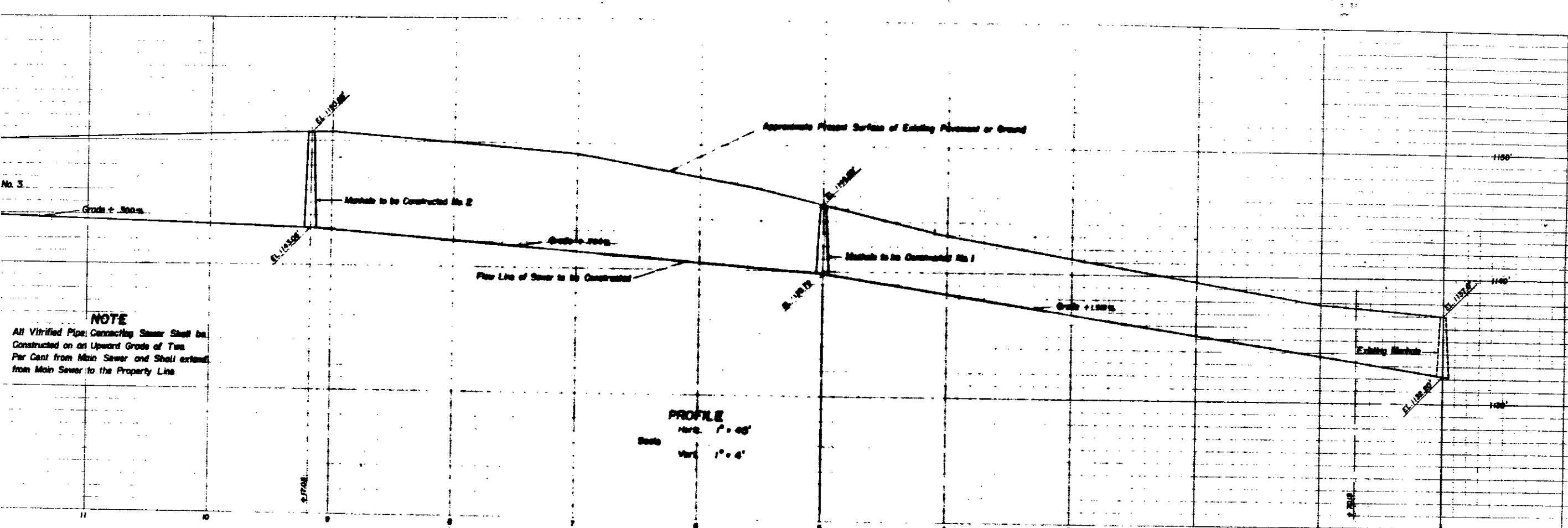
PROFILE
 Horiz. 1" = 40'
 Vert. 1" = 4'

PLAN
 Scale 1" = 40'



PLAN ADOPTED

DEPARTMENT OF ENGINEERING
 CITY OF SAN BERNARDINO
 UNION STREET
 WESTERN AVE. TO MUSCOTT AVE.



LEGEND
 " or in. means inch or inches
 ' or ft. means foot or feet
 No. means number
 C. means Center Line
 EL. means Elevation
 8" Vitrified Pipe Sewer to be Constructed Shown Thus
 8"x4" Wyes with 4" Connecting Sewers to be Constructed Shown Thus
 Manholes to be Constructed Shown Thus
 High pressure gas main Shown Thus
 Water main Shown Thus
 Manhole now in Shown Thus

SEWER DETAIL
 Lineal ft. of 8" Vitrified Pipe Sewer to be Constructed
 Lineal ft. of 4" Vitrified Pipe Sewer to be Constructed
 No. of 8"x4" Wyes with 4" Connecting Sewers to be Constructed
 No. of Manholes to be Constructed

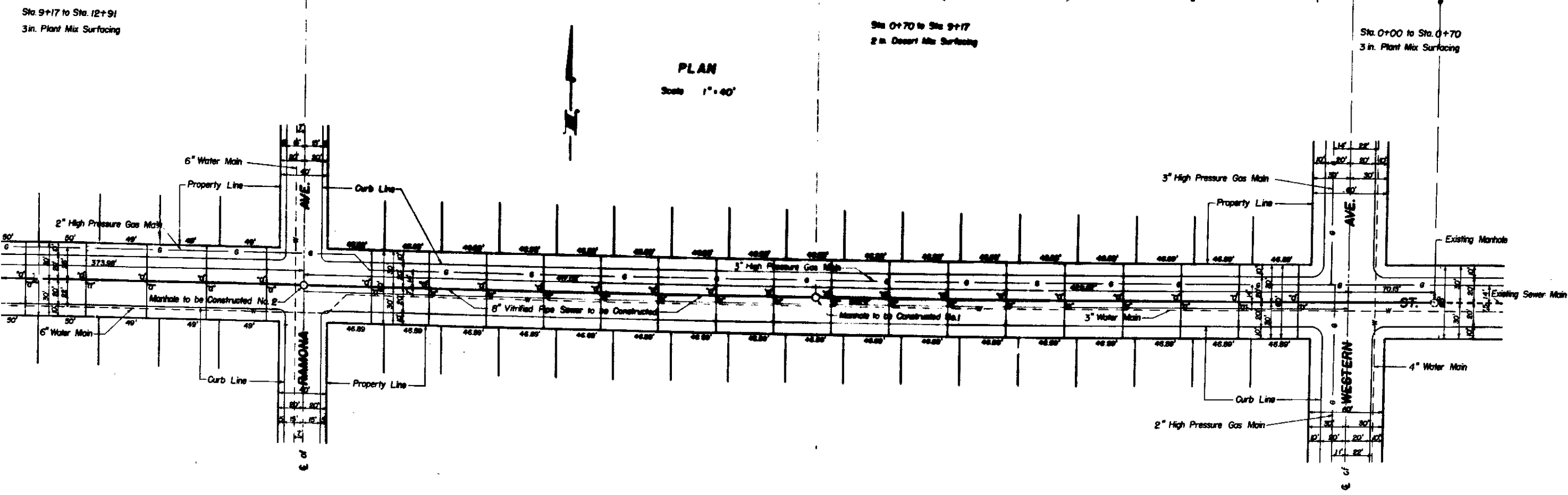
TITLE TO STREETS
 Lateral Avenue changed to Union Street by Resolution No. 109, of the City of SAN BERNARDINO, CALIFORNIA, adopted November 3, 1930.
 Union Street dedicated by Map of Tract No. 1822, Block 18 Tract recorded in Book 26 of Maps, Page 4, and Map of Tract No. 2966 recorded in Book 40 of Maps, Page 9, Records of SAN BERNARDINO COUNTY, CALIFORNIA.

DATUM
 All elevations shown are in feet and are above a plane which is 1045.28 feet below the City Bench Mark as established by Ordinance 383 of the City of SAN BERNARDINO, CALIFORNIA.

NOTE
 All Vitrified Pipe Connecting Sewer shall be constructed on an upward grade of Two Per Cent from Main Sewer and shall extend from Main Sewer to the Property Line

PROFILE
 Horiz. 1" = 40'
 Vert. 1" = 4'

PLAN
 Scale 1" = 40'



PLAN ADOPTED

DEPARTMENT OF ENGINEERING
 CITY OF SAN BERNARDINO
 UNION STREET
 WESTERN AVE. TO MUSCOTT AVE.